

### **POLYMIXTE** *The dual technology combination*

Invented and patented in 1997 by GIRON, this exclusive concept is an innovative reply to several screening questions:

- To increase the service-life of your conventional woven-wire screens while keeping the screening yield
- To improve the yield of polyurethane screens
- To optimize the elimination of run-off water on a deck equipped with polyurethane screens

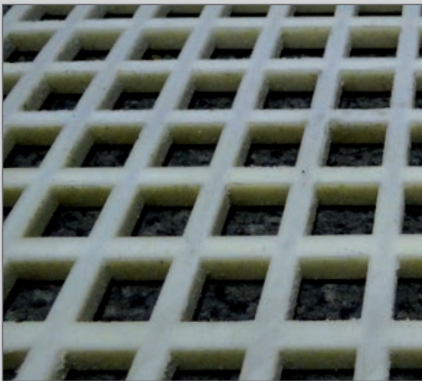
#### **Certified cost-effective solution**

- **Permeability x2** of your polyurethane installations
- **Service-life x8** of your conventional steel mesh

These screens can be equipped with hooks (lateral-or end-tensioning), mounted on frame or produced in modular systems. The POLYMIXTE offers profitable solutions to replace your standard equipment in case of screening without clogging or pegging problems.

#### STANDARD RANGE

$4\text{ mm} \leq \text{Mesh} \leq 28\text{ mm}$   
 4 different profiles  
 selected by us  
 according to  
 your applications.



### **POLYTECH**

The tensioned POLYTECH screen could be considered as an efficient anti-clogging polyurethane solution. The screen is very flexible and lightweight. It could mainly be characterized by:

- High efficiency (equivalent to steel mesh)
- High service-life (up to x5 compared to steel mesh)
- High Simplicity for installation (lightweight and roll up)

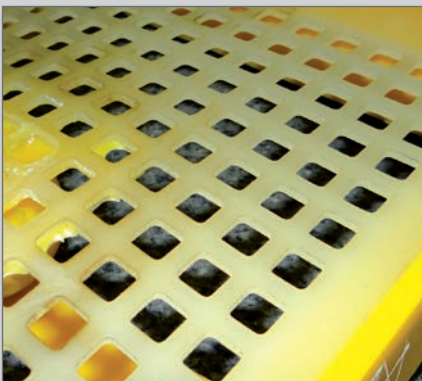
Optimized anti-clogging version is also available for meshes < 10 mm.

It is important to understand the max aggregates' sizes received on the POLYTECH shall not exceed twice the mesh.

Example: for a requested mesh at 6 mm, the max products size to fall on the screen is 12 mm.

#### STANDARD RANGE

$2\text{ mm} \leq \text{Mesh} \leq 15\text{ mm}$   
 Maximum dimensions:  
 $2\ 500\text{ mm} \times 1\ 500\text{ mm}$



### **POLYFLEX**

Basically named «Drum skin», this solution has been existing for a long time. The POLYFLEX is composed of a thin perforated polyurethane membrane which is prestressed on a rigid polyurethane frame (modular system).

The polyurethane chemical formula used to manufacture this membrane is totally different than conventional polyurethane screen or module. This solution is mostly proposed in modular system for screening clogging materials, and where the yield consideration is higher than wear resistance.

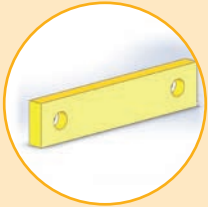
The POLYFLEX could be supplied as a tensioned screen. In this case, GIRON suggests you to select the POLYTECH which will give you better benefits with a profitable quality-price ratio.

It is important to understand the POLYFLEX does not accept too heavy load.

#### STANDARD RANGE

$1.6\text{ mm} \leq \text{Mesh} \leq 60\text{ mm}$   
 $1.5\text{ mm} \leq \text{Thickness} \leq 5\text{ mm}$

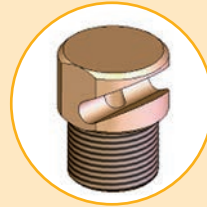
Examples of accessories delivered by GIRON and required for profitable screening.



Rubber or polyurethane lateral protections



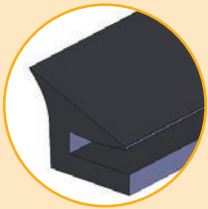
Polyurethane protection tube for spraying ramp



Spraying nozzles



Overlapped and anti-dust sheet rolls made of anti-abrasive rubber



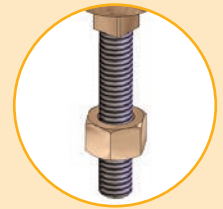
Rubber seal for meshes mounted in end-tensioning system



Range of deflectors for guiding product on screening area



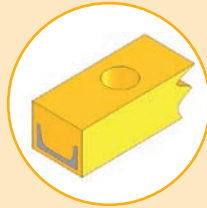
Anti-clogging accessories (balls, garlands, rods)



Bolt accessories



Champ rail bar in anti-abrasive steel, rubber or polyurethane plated



Central fixing ramp in anti-abrasive steel, rubber or polyurethane



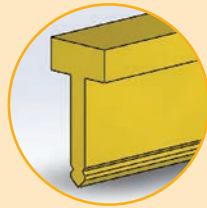
Anti-abrasive rubber profiles



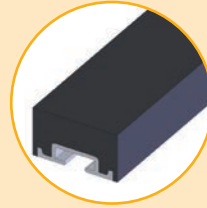
Rail for modular systems



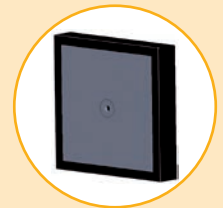
A.M.O. profile for steel or Polymixte mesh (MGI modular system)



Polyurethane «T-key» bar (MGI modular system)



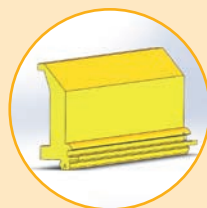
Impact rods made of anti-abrasive rubber



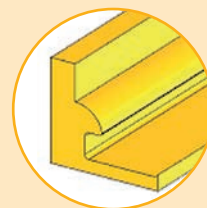
Armor-plated square pads made of anti-abrasive rubber or polyurethane



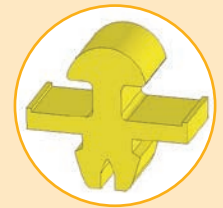
Polyurethane wedge



Polyurethane lateral protection with fixing profile (modular systems MGI or MIG)



Side fixing profile for MIG module



Central fixing profile for MIG module